

Margaux Resources Ltd. is focused on the exploration and development of previously producing properties in the Kootenay Arc, southeastern British Columbia, including the Jersey-Emerald, Sheep Creek, Bayonne, Jackpot/Oxide and Canex, Ore Hill and Aspenex properties. Committed to operating safely and in an environmentally responsible way, Margaux aims to develop strong engagement with local communities.



TSX - V
MRL

OTCQB
MARFF

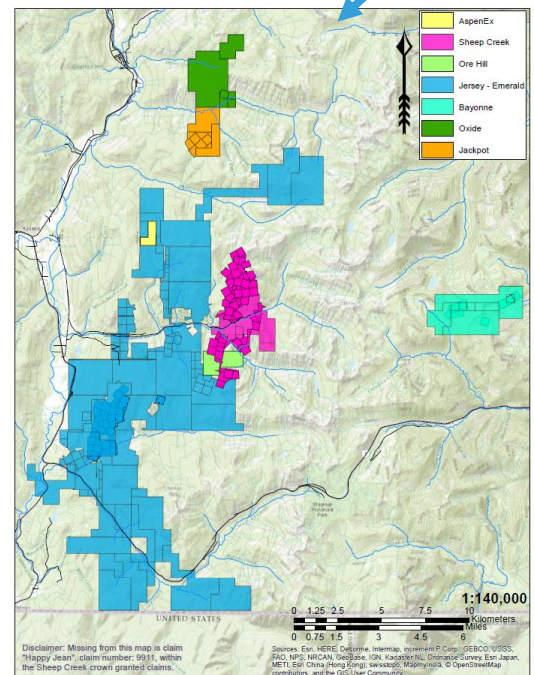
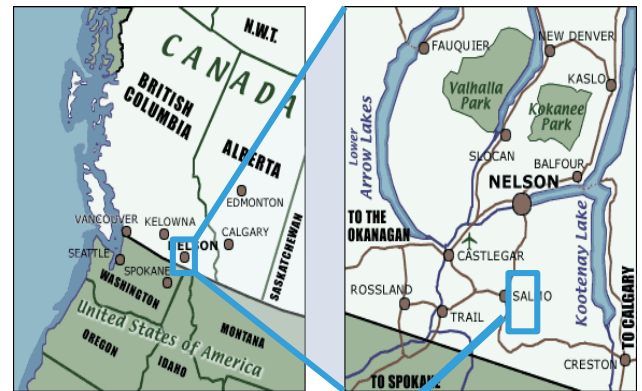
Company Highlights

- Jersey-Emerald zinc-lead, tungsten + gold project
 - Acquired in 2014
- Jackpot/Oxide zinc, lead + silver properties
 - Acquired in 2016
- Bayonne & Sheep Creek gold + silver properties
 - Acquired in January 2017
- Ore Hill & Aspenex gold, silver + zinc-lead properties
 - Acquired in March 2017
- Operational diversity with expansionary upside
- Robust project economics (internal)
- Recently raised C\$2.04 million
- Brownfield project
 - Extensive exploration completed
 - Infrastructure in place
- Close proximity to organic + acquisition growth opportunities
 - To extend mine life + increase production
- Stable geopolitical environment

Share Structure

Recent Share Price ⁽¹⁾	C\$0.36
52 Week (Low – High)	C\$0.11 - \$0.50
Market Capitalization	C\$13.3 million
Issued & Outstanding	36,918,908
Full Diluted Shares	51,327,908

(1) February 24, 2017



Above: Margaux has mineral claims to ~18,570 ha and Crown grants of ~1,765 ha, which includes the Jersey-Emerald, Jackpot/Oxide, Bayonne, Sheep Creek, Canex, Ore Hill and Aspenex properties, including historic mines as well as a large under-explored land package.

ON THE PATHWAY TO PRODUCTION



margaux resources

Management & Board

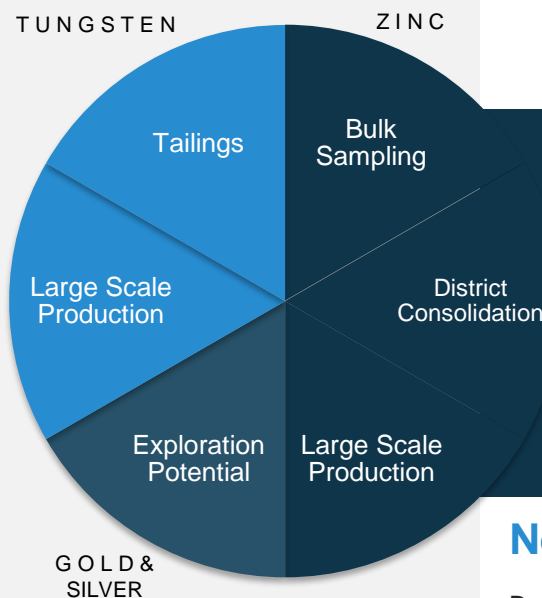
- James A. Letwin**, Chairman & Director
- Tyler Rice**, President & CEO, Director
- Edward Lawrence**, Director
- Robert Derkitt**, Director
- Doug Foster**, Director
- Jason Linewich**, CFO
- Linda Caron**, VP Exploration
- Ryan Bignucolo**, VP Bus. Development

TSX - V
MRL

OTCQB
MARFF

Jersey-Emerald Mine

- Focused on zinc-lead + tungsten
- Historic producing mine, formerly:
 - 2nd largest zinc-lead mine in B.C.
 - 2nd largest tungsten mine in North America
- Surface + mineral rights in place, rights to over 30,000 acres
 - Mineral claims in good standing until December 2021
- Undertaking exploration & development work
- Property hosts areas with elevated gold, silver, bismuth + molybdenum
- Encouraging recent grab samples results from outside the historically mined area:
 - 7.9% zinc, 22.6% lead, 646 g/t (22.8 oz/t) silver
 - 11.6% zinc, 12.8% lead, 228 g/t (8.0 oz/t) silver



Zinc

- Falling inventory levels at a time when demand is increasing
- Likely to lead to increasing zinc prices supporting new entrants to the market
- New products such as Zinc Air Batteries to have a significant impact on demand

Gold + Silver

- High-grade Gold discovery 25.0 g/t over 10 m on Jersey-Emerald
- Including a portion with up to 68.3 g/t gold
- Newly acquired Jackpot /Oxide, Sheep Creek, Bayonne, Ore Hill & Aspenex prospective for gold + silver

Tungsten

- Critical metal
- Unique properties for many industrial, commercial + military applications
- Poor substitutability by other metals due to tungsten's unique physical and chemical characteristics

Near Term Catalysts

Data Mining

- Digitize & review of all historical data
 - Geotechnical survey
 - Topography survey
- Underground LiDAR survey

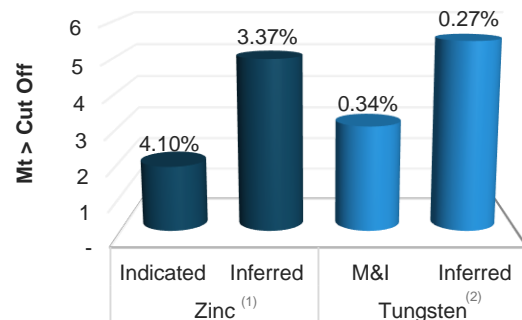
Modern and Methodical approach to development

- Creating an optimized 3D geological + mineralization model

Regional Consolidator

- Jackpot/Oxide, Sheep Creek, Bayonne, Canex, Ore Hill & Aspenex properties acquired in 2016 and 2017
- Evaluation of other Kootenay area properties

Jersey-Emerald Resource & Grade



(1) Zinc cut-off 3.50%. Resources estimation by Giroux & Gruenberg (2010), in compliance with NI 43-101. Currently under review and update by Margaux
 (2) Tungsten cut-off 0.15%. Resource estimation by Giroux and Gruenberg (2014) in compliance with NI 43-101

Contact

INVESTOR RELATIONS

+1 403-537-5590

info@margauxresources.com

HEAD OFFICE

1600 - 510 5th Street SW
 Calgary, AB, T2P 3S2, Canada